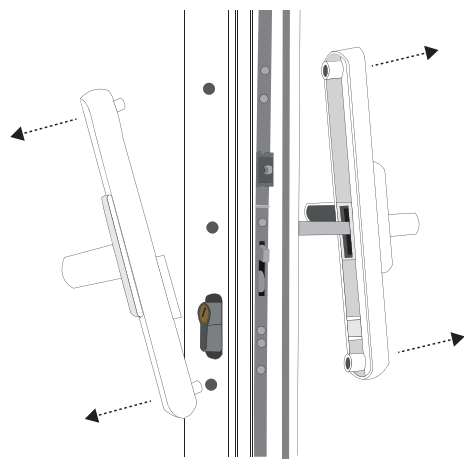
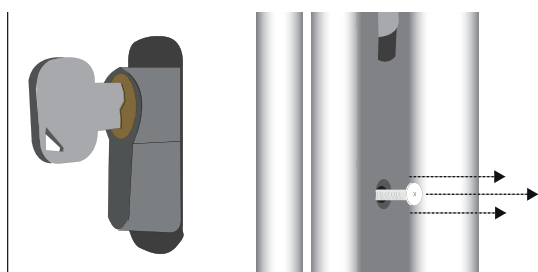


1 Remove the existing handle and cylinder

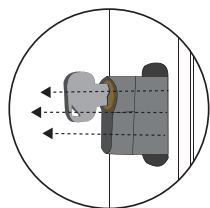
Prepare the door for your V-MPL to be fitted. Hold the door in the open position, use a wedge to prevent movement during installation.



- 1.1 Undo the screws from the handle.
- 1.2 Remove both sides of the handle and set aside for fitting later.
- 1.3 Next remove the euro cylinder. Take out the cylinder's retaining screw.

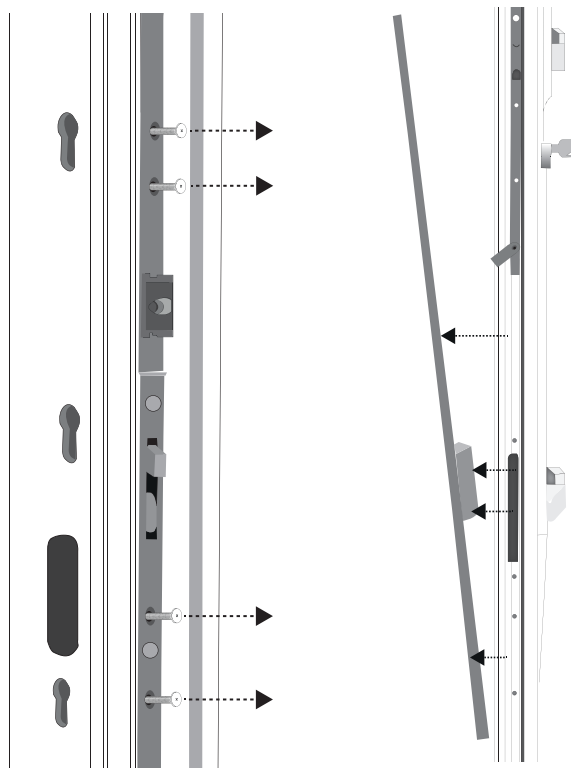


- 1.4 Remove the cylinder from the door and set aside.



2 Remove the old lock

Once the handle and cylinder have been removed the old lock can be extracted from the door.

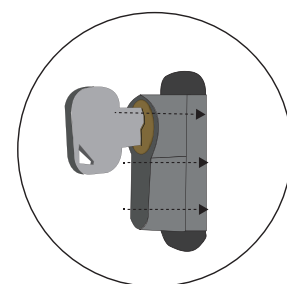


- 2.1 Undo all of the fixing screws from the faceplate, leaving the ones either side of the locking points in place.
- 2.2 Remove the old lock from the door.

3 Fit the centre section of the V-MPL

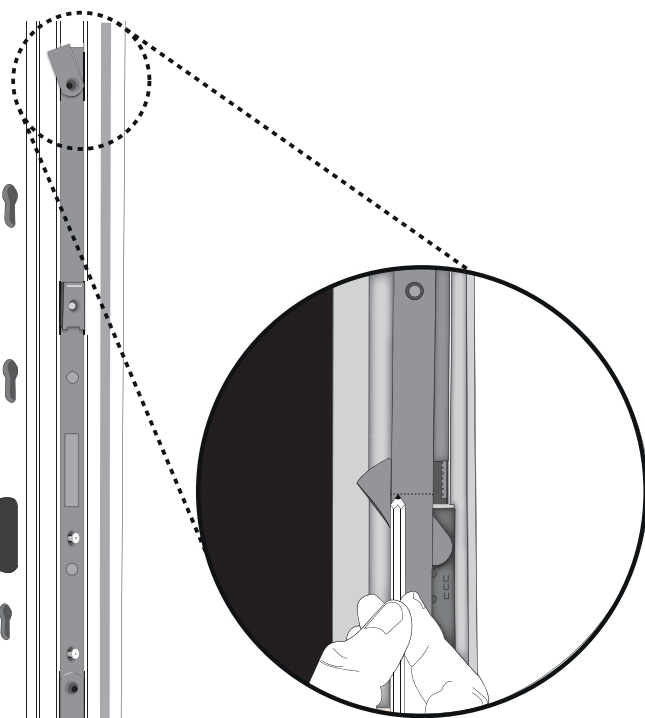


- 3.1 Slot the centre section in to the middle hole where the previous centre case was originally.
- 3.2 Fit the cylinder to the centre section and fix using the retaining screw through the faceplate of the centre section.
- 3.3 Screw the faceplate of the centre section to secure it to the door profile.
- 3.4 Re-fit the door handles.



4 Crop the extension pieces

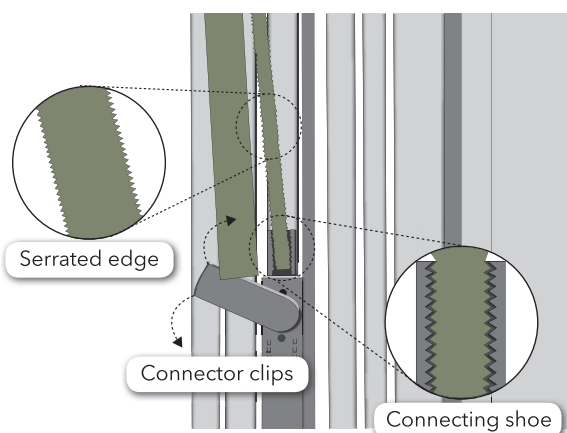
- 4.1 Offer the top extension piece to the door profile, inserting the hook case in to the hole where the previous top locking point used to sit.



- 4.2 Where the extension piece meets the centre section, mark where the extension piece should be cut to connect to the receiver.
- 4.3 Remove the extension piece and crop using a saw or bolt croppers on the line you have marked.
- 4.4 Repeat for the bottom extension piece. (Offer the extension piece to where the previous bottom hook case used to sit.) Mark where the extension piece meets the connector and then crop.

5 Fit the extension pieces

- 5.1 Starting with the top extension piece, insert the hook case into the hole vacated by the old lock's top locking point.
- 5.2 Swing the connector clip out on the centre section to allow you to clip the serrated end of the extension piece into the female connecting shoe on the centre section.
- 5.3 Screw the faceplate of the extension piece to secure it to the door profile.
- 5.4 Swing the connector clips back inline to ensure that the extension parts stay fitted to the door, and re-secure it with a fixing.
- 5.5 Repeat for the bottom extension piece.
- 5.6 To test, use a multi-tool to throw the locking points and engage/disengage them. This is the best way to ensure the centre section and extension pieces are all properly connected.



- 5.7 Insert your euro cylinder and handles respectively. PLEASE NOTE: If your locking points **did NOT** engage, you need to check your male and female connection.

The V-MPL is supplied with fixing tabs to be used where you cannot get a fixing on the extension piece.



6 Fit the keeps

VERSA keeps are supplied with packers which allow the keep to suit any profile. There is a raised tab on the reverse side of the packer. Press this into the back of the keep using the serrated teeth cut out on the keep to hold it in place (one of the three options to hold it in place). Between the 3 options available, you will have all the profiles available. Then tighten grub screws.

- 6.1 Remove and discard the old keeps.

Centre Keep:

- 6.2 Engage your locking points so the deadbolt on the centre section is thrown. Do this by lifting the lever up.

Slightly close the door and draw a line on the door frame, marking the middle of the latch and deadbolt.

- 6.3 Open the door, and position the centre keeps holes with the lines marked on the door frame. Then screw fix the keep to the frame in position.

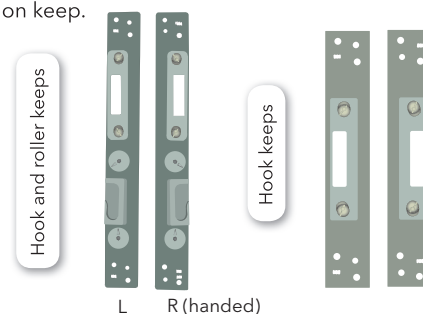
Latch and deadbolt keep

Extension Keeps:

- 6.4 Slightly close the door and draw a line on the door frame marking the middle of the hook and roller.

- 6.5 Make sure you also engage your locking points here so the deadbolt on the centre section is thrown. Do this by lifting the lever up.

Open the door, and position the hook and roller keep holes with the lines marked on the door frame. Then screw fix the keep to the frame in position. Repeat with the other extension keep.



L R (handed)