



EURO MORTICE DEADLOCK AND SASHLOCK FITTING INSTRUCTIONS

Note: Although the instructions and illustrations refer to sashlocks, the same procedure applies to deadlocks.

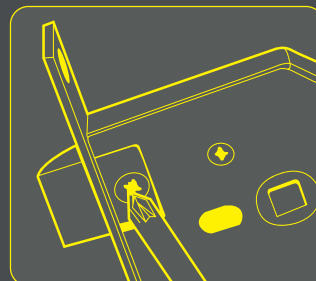
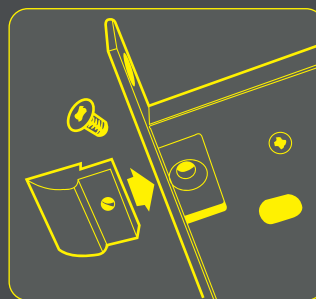
To fit a Mortice lock you will require the following tools:

- Drill
- Drill bits (17mm 11/16")
- Pozidrive screwdriver
- Chisel
- Pencil
- Mallet

Note: It is recommended that suitable pilot holes are drilled before fitting fixing screws (especially in hardwood).

SASHLOCKS REVERSING THE SASHBOLT (LATCH)

Remove the latch bolt screws, slide out the bolt, revolve through 180° and replace back into lock. Refit screws tightly.



More security for less.

INSTALLING THE LOCK



A. Start by deciding on the height of the mortise lock, this should be slightly lower than the centre of the door. If in doubt check the height of other locks in the property as ideally all door handles should be the same height from the floor. Place the lock body against the door edge and mark the top and bottom of the lock body on the door edge, avoiding joints of cross members in the door.

B. Between these two lines mark the central vertical position (dotted line). Along this vertical line drill a series of overlapping holes in the lock depth. In order to drill to the correct depth apply adhesive tape to the drill bit to the measured lock depth (including forend and faceplate depth).

C. Carefully chisel out remaining wood to make a rectangular hole (mortise) to accommodate lock body.

D. With lock body inserted, draw around forend on door edge - remember to add removable faceplate before tracing outline. Remove lock and chisel recess to accommodate lock faceplate. Place lock in door and ensure a good fit with faceplate flush with door edge.

Note: With lock fitted into door, check that the sashbolt is suitable for your door opening. Gently close door. The curved edge of the sashbolt (latch) must be facing the door frame, if not, the sashbolt must be reversed (see first page for instructions).

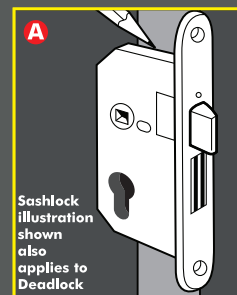
E. With the lock held against the door face ensuring faceplate is flush with door edge and in line with lock recess, mark position of the euro cylinder (and spindle). Drill and cut holes on both sides of the door for the euro cylinder (and spindle). Fit lock flat into door making sure that the euro cylinder (and spindle) pass freely into the lock.

Note: insert the cylinder retaining screw through the lock end face before fitting the faceplate in position.

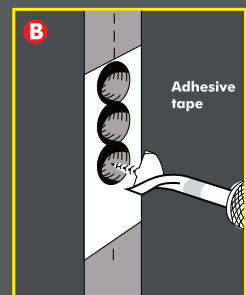
F. With faceplate in position secure the lock into the door with screws provided. Fit escutcheons and/or door handles with spindle cut to suit. Test for easy working operation.

G: With the door open and the bolt in the locked position, close the door gently against the doorframe. Mark positions from the bottom of the deadbolt to the top of the latch bolt. Between these two lines mark a central vertical line (dotted line) on the door frame.

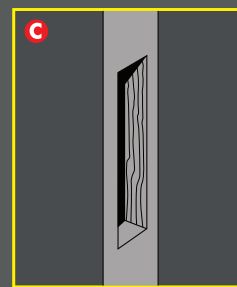
H. Hold box striker up to door frame, ensuring the box section is in line with previous markings. Draw around box section of the box striker on the door frame. Along the vertical line (**G**), drill a series of overlapping holes to the box depth. Hold box striker up to frame and draw around the edge. Remove the box striker and chisel out so that box striker sits flush in door frame. Secure the box striker using screws in the central or elongated holes only. Test lock for working operation, and adjust position of the box striker if required. When aligned correctly, fit the two remaining screws.



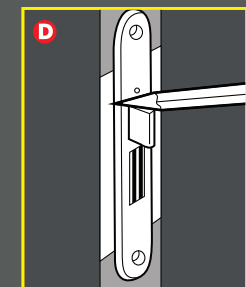
Mark position of lock



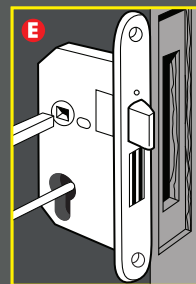
Drill hole for mortise



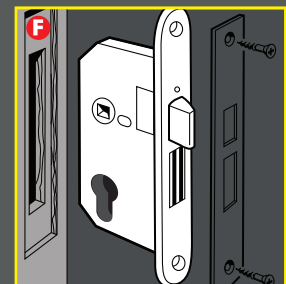
Chisel out mortise



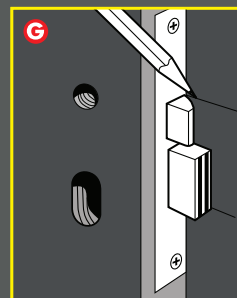
mark and chisel recess



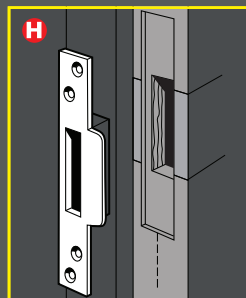
Mark & drill holes



Fit lock



Mark position



Fit box strike